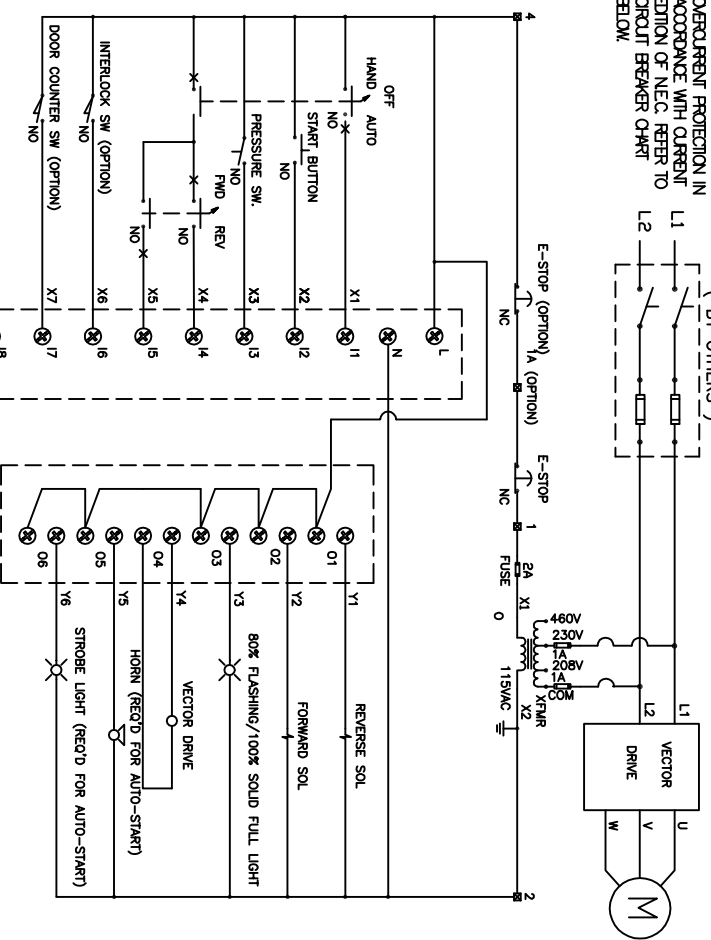


CAUTIONER TO SUPPLY AND INSTALL INCOMING SERVICE DISCONNECT AND BRANCH CIRCUIT OVERCURRENT PROTECTION IN ACCORDANCE WITH CURRENT EDITION OF NEC. REFER TO CIRCUIT BREAKER CHART BELOW.

WARNING: 1PH 230V POWER ONLY (BY OTHERS)



HYDRAULIC POWER UNIT REFERENCE
 System Relief: 1700-1800 psi
 Pressure Switch: 1500 psi

WARNING: Modification of system settings or pressure settings are to be done by authorized and trained personnel only. Refer to user manual for operation of hydraulic power unit.

RED LIGHT REFERENCE

Slow Blinking - 80% Compactor Full. Pressure switch was activated at tail end of most recent extend stroke.
 On - 100% Compactor Full. Pressure switch was activated during last 10 consecutive extend strokes. Reset by turning key switch to Off and pressing E-stop.
 Fast Blinking (w/ horn 20 sec). Auto-Start Initializing [requires auto-start].
 Fast Blinking (continuously): Auto-start has been interrupted by either E-Stop engaged, loss of power, 100% compactor full, or other fault conditions [requires auto-start].

B&J Atlantic, Inc.
 5164 Shawland Road
 Jacksonville, FL 32254
 Phone: (904) 358-0288
 Fax: (904) 358-0289
 www.bjatlantic.com

SMART COMPACTOR POWER UNIT
VECTOR DRIVE
ELECTRICAL SCHEMATIC

SIZE: DWG FILE: HE-CD20-VD-ICC.DWG
 MAKE: ENG.: SCALES:

ELECTRICAL CONTROL PANEL GUIDELINES

WARNING: Risk of Fire or Electric Shock - The opening of the branch-circuit protective device may be an indication that a fault current has been interrupted. All current carrying parts and other components protected by this device should be examined and replaced if damaged.
WARNING: Risk of Fire or Electric Shock - If burnout of a current element of an overload relay occurs, the complete overload relay must be replaced.

1. Customer to supply and install incoming service disconnect and branch circuit overcurrent protection device in accordance with current edition of NEC and local codes. Refer to chart below.
2. Conductor sizing to be determined by current edition of NEC and local codes. Lugs must be torqued to proper setting. Refer to chart below.
3. Fuse chart below. Failure to use correct fuse will result in either inoperative equipment or possibility of fire or safety hazard.
4. Refer to chart below for correct overload current setting to match full load amps of motor. Incorrect setting can result into damage of electrical components and motor not covered by warranty.

RECOMMENDED INVERSE TIME CIRCUIT BREAKER

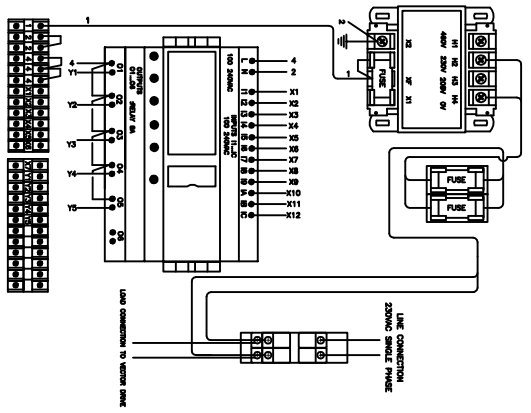
HP/V	230V
SHP	50A
10HP	100A

TORQUE SETTING & CONDUCTOR SIZING

DEVICE	TORQUE	CONDUCTOR SIZE	WIRE TYPE
PDB LINE	120 lb-in	8.4 AWG	Cu Stranded 75C
PDB LOAD	45 lb-in	14.4 AWG	Cu Stranded 75C
FUSE BLOCK	20 lb-in	16.10 AWG	Cu Stranded 75C
TRANSFORMER PRIMARY	20 lb-in	16.14 AWG	Cu Stranded 75C
TRANSFORMER SECONDARY	7 lb-in	22.14 AWG	Cu Stranded 75C
GROUND LUG	15 lb-in	10.3 AWG	Cu Stranded 75C

FUSES GUIDE

DEVICE	PART#	SPECIFICATION	CURRENT
TRANSFORMER PRIMARY	ATOR1	Class CC	1 A
TRANSFORMER SECONDARY	OTW2	Class M	2 A



B&J Atlantic, Inc.
 5164 Shawland Road
 Jacksonville, FL 32254
 Phone: (904) 358-0288
 Fax: (904) 358-0289
 www.bjatlantic.com

SMART COMPACTOR POWER UNIT
VECTOR DRIVE
GUIDELINES/ELECTRICAL LAYOUT

SIZE: DWG FILE: HE-CD20-VD-ICC.DWG
 MAKE: ENG.: SCALES: